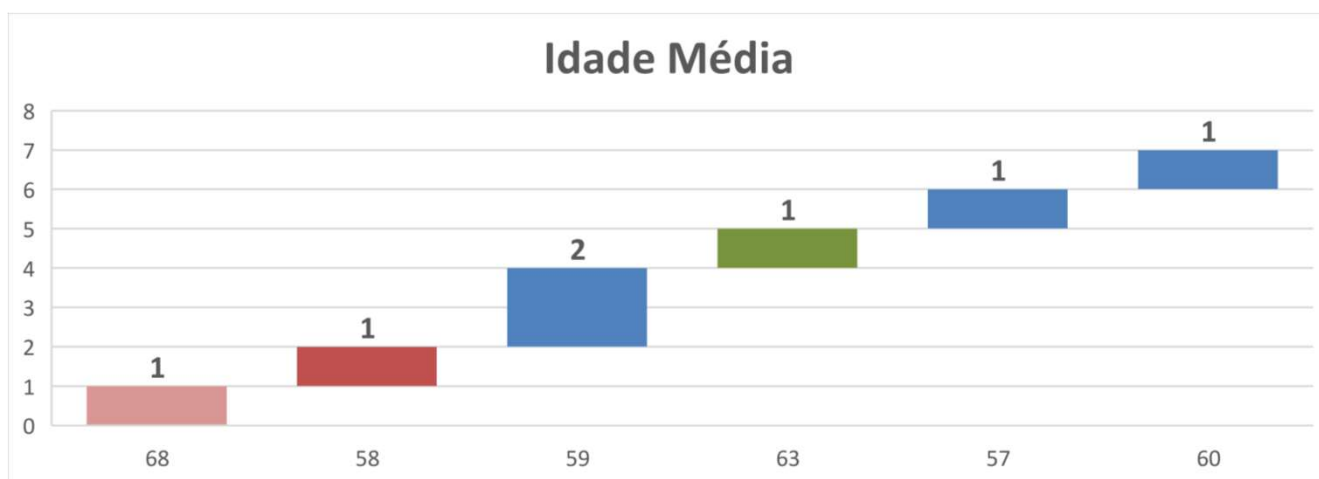
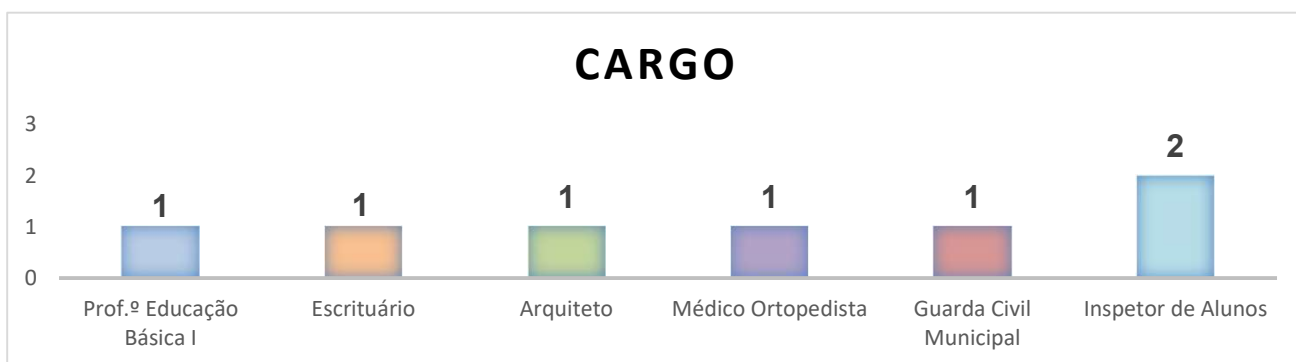
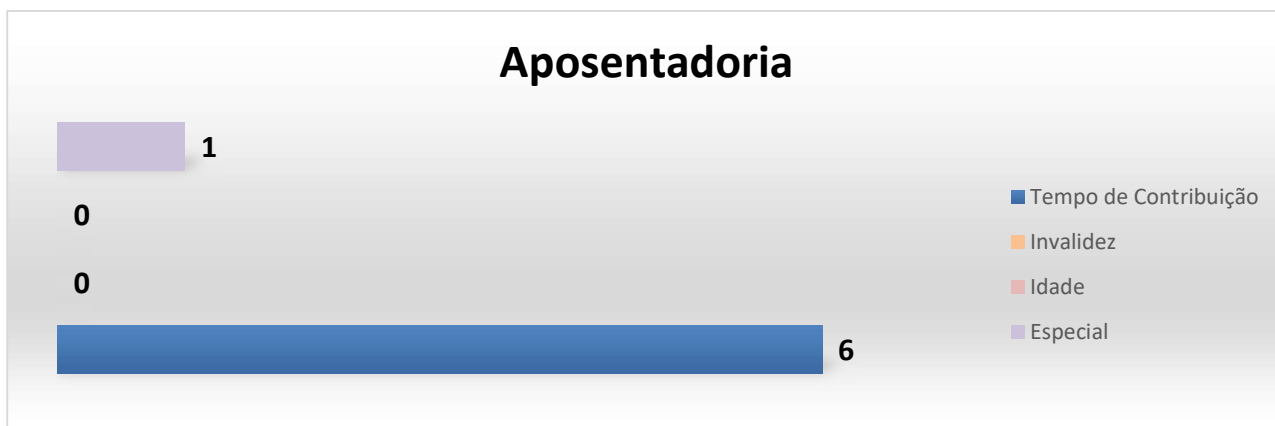
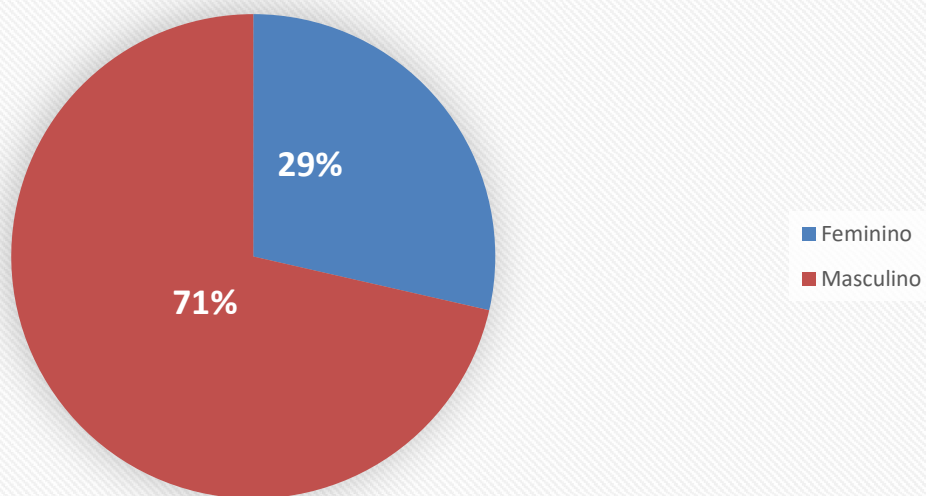


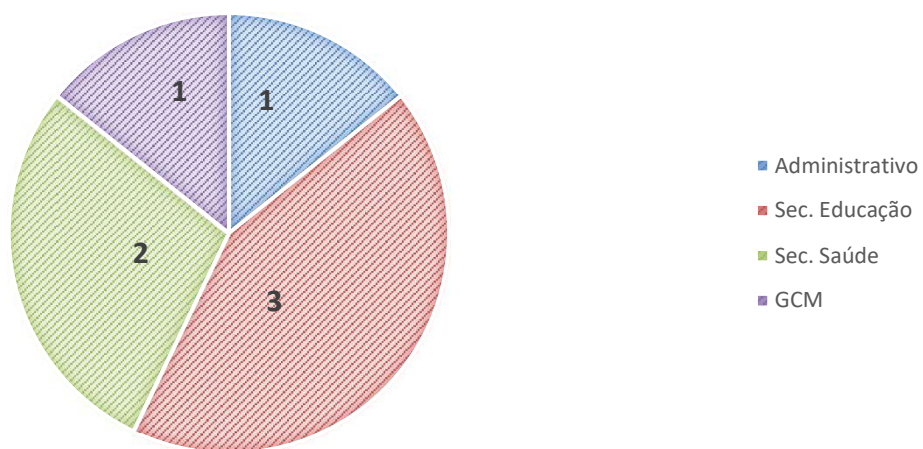
APOSENTADORIA MENSAL

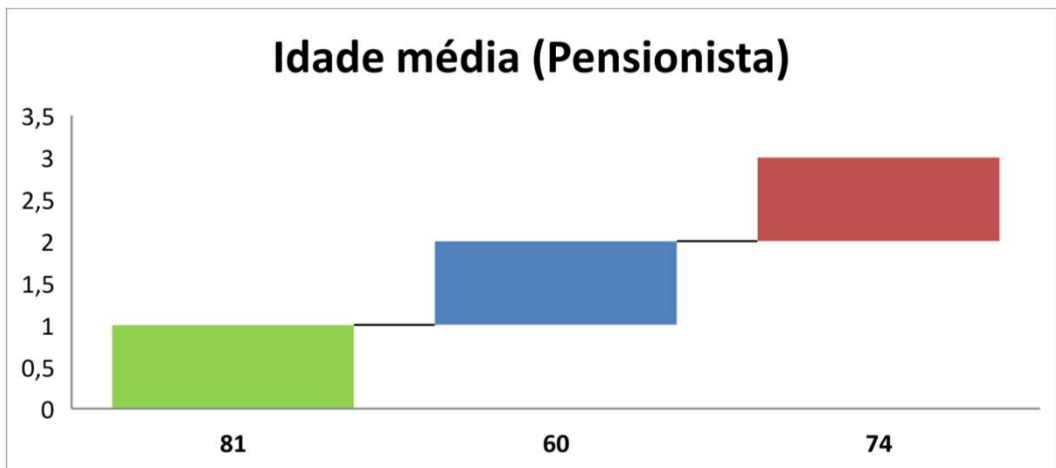
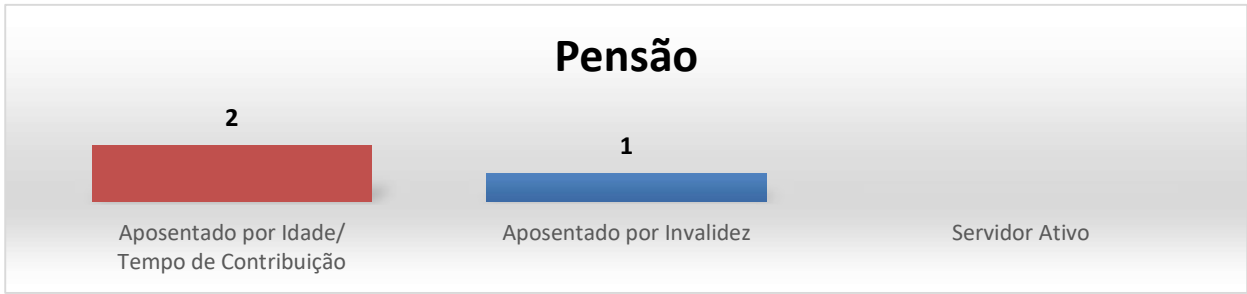


Gênero

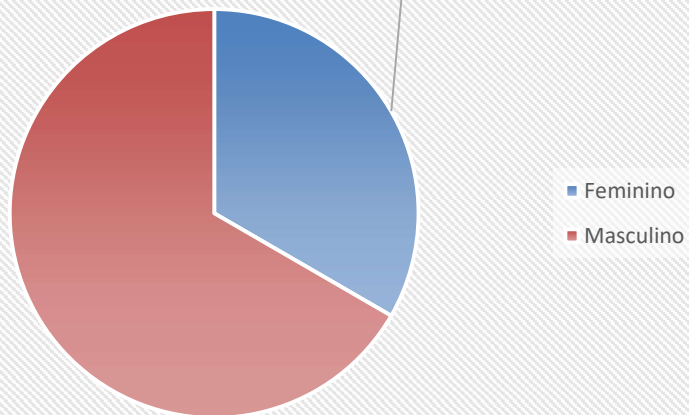


SECRETARIA

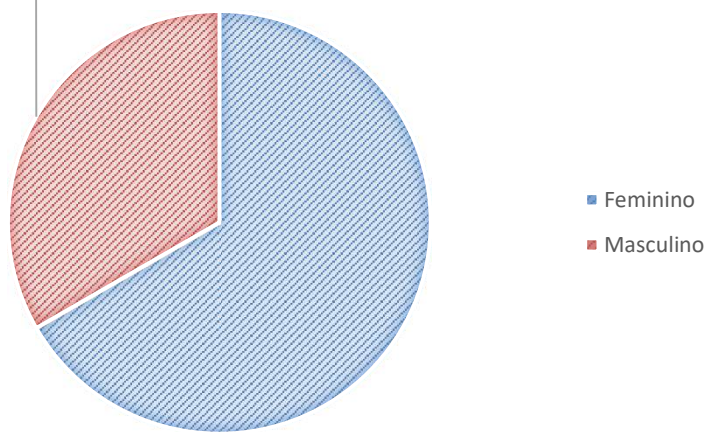




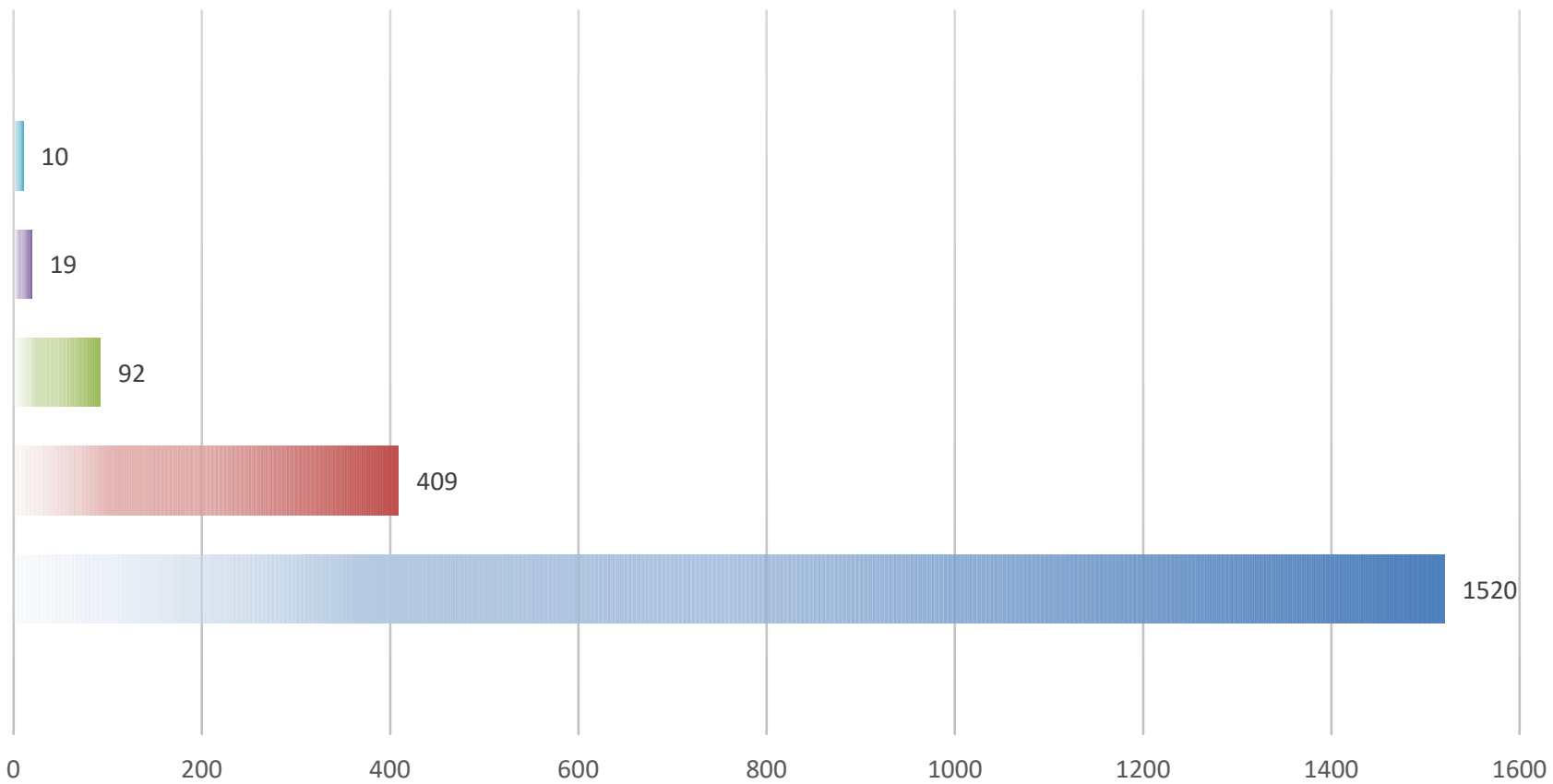
Gênero (Instituidor de Pensão)



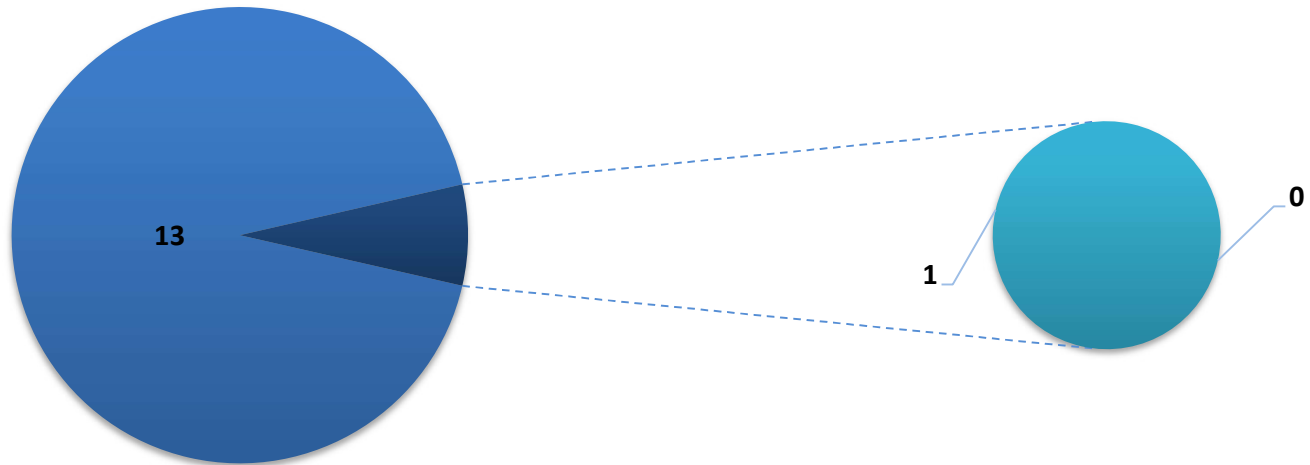
33% GÊNERO (PENSIONISTA)



QUADRO GERAL DE PESSOAL - CONTRIBUINTES (DEZ/2023)

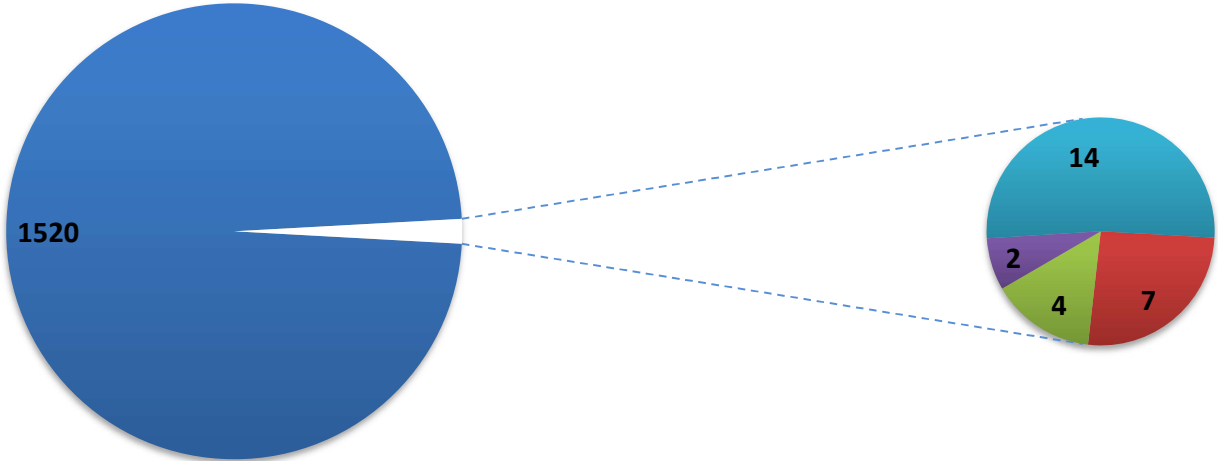


QUADRO GERAL DE PESSOAL BERTPREV (2023)



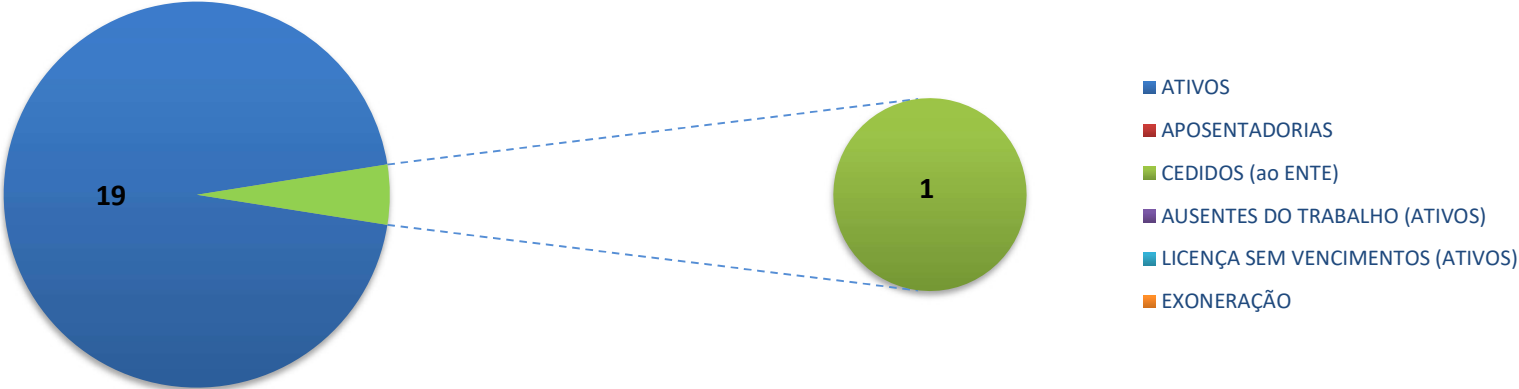
■ ATIVOS ■ APOSENTADORIAS ■ CEDIDOS (ao ENTE) ■ AUSENTES DO TRABALHO (ATIVOS) ■ LICENÇA SEM VENCIMENTOS (ATIVOS) ■ EXONERAÇÃO

QUADRO GERAL DE PESSOAL PMB (2023)

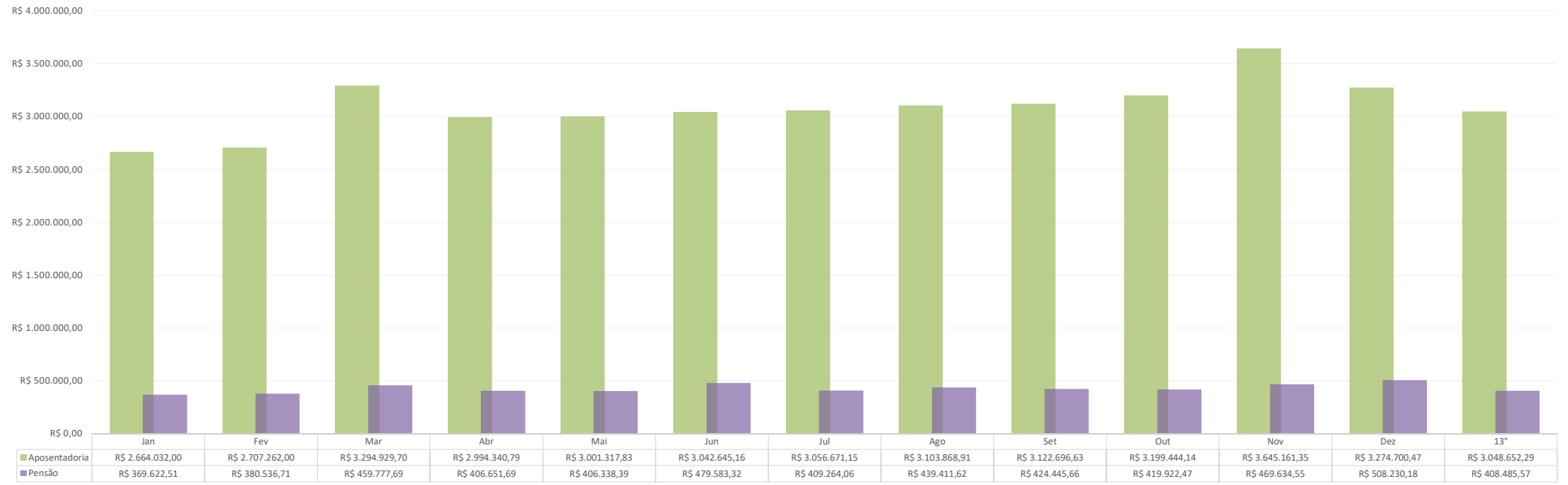


■ ATIVOS ■ APOSENTADORIAS ■ CEDIDOS (ATIVOS) ■ AUSENTES DO TRABALHO (ATIVOS) ■ LICENÇA SEM VENCIMENTOS (ATIVOS) ■ EXONERAÇÃO

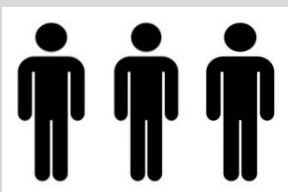
QUADRO GERAL DE PESSOAL CMB (2023)



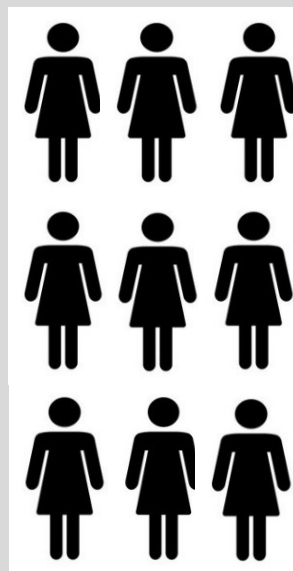
Pagamento Previdenciário 2023



DISTRIBUIÇÃO DE APOSENTADOS SEGUNDO O SEXO (2001 - 2023)

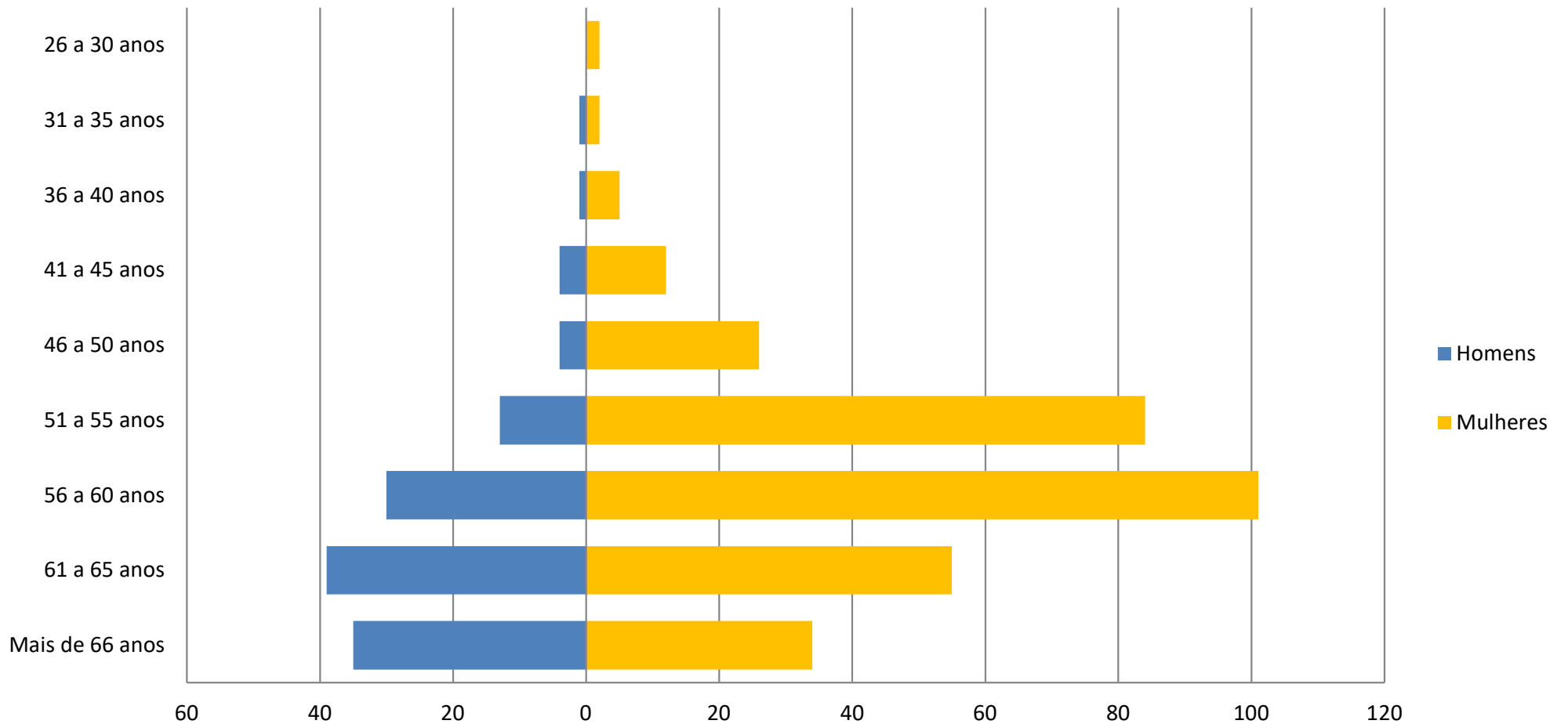


Homens
127
28,35%



Mulheres
321
71,65%

PIRÂMIDE ETÁRIA DOS SERVIDORES APOSENTADOS (2001 - 2023)



EVOLUÇÃO DO QUANTITATIVO DE APOSENTADOS

(2001 - 2023)

