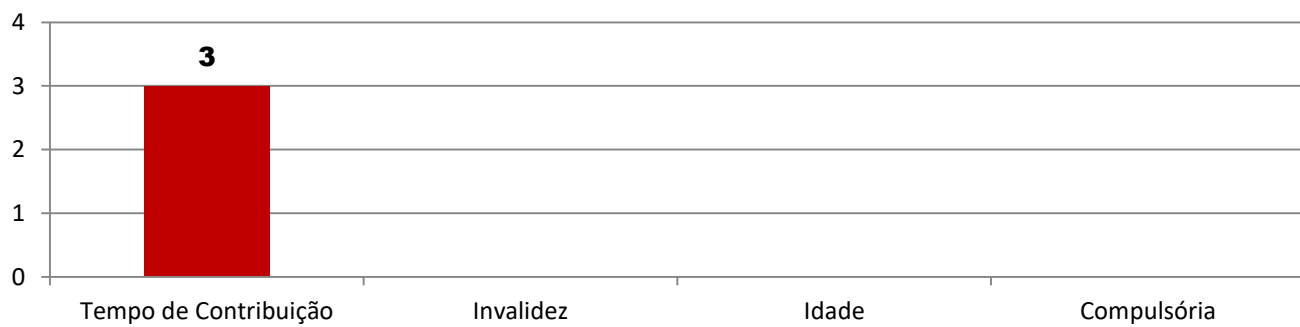


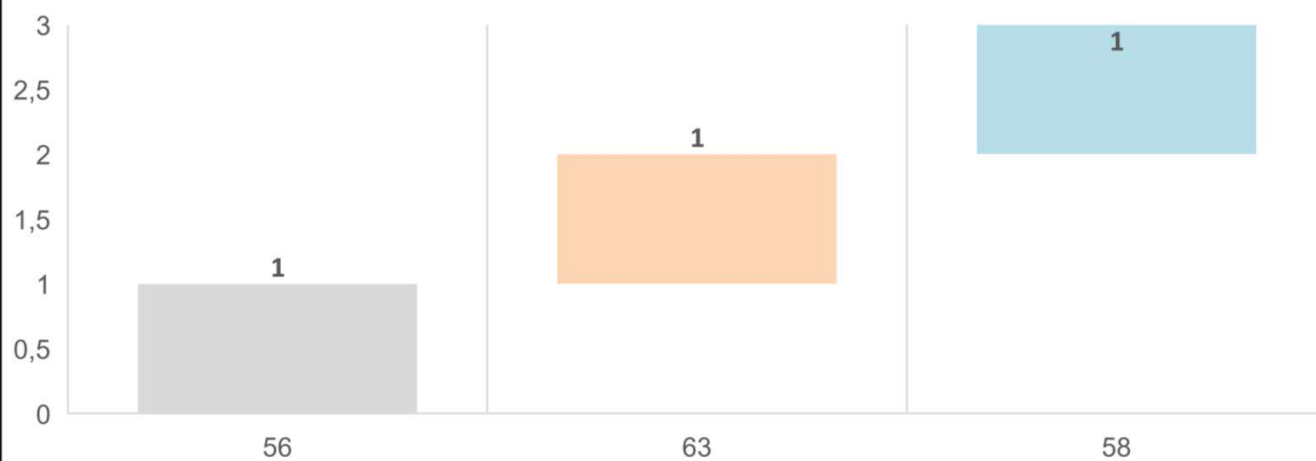
Aposentadoria



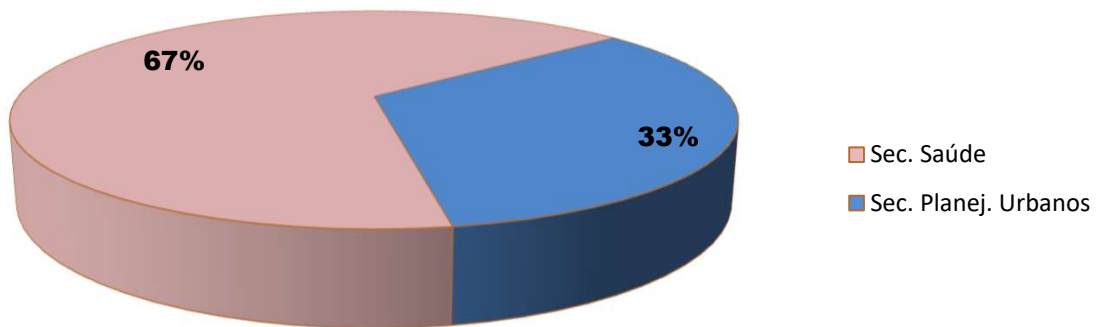
Cargo



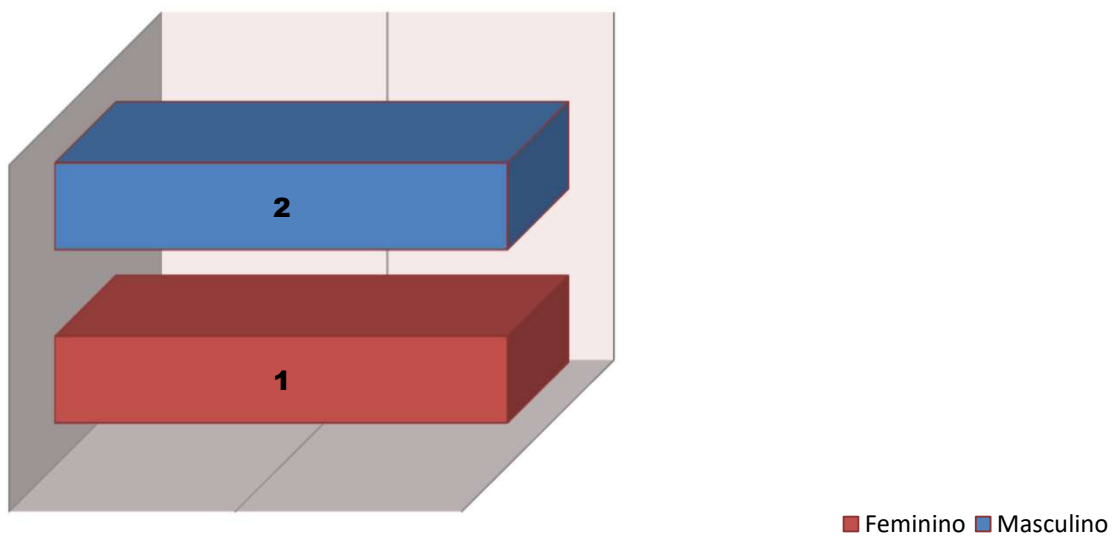
Idade média



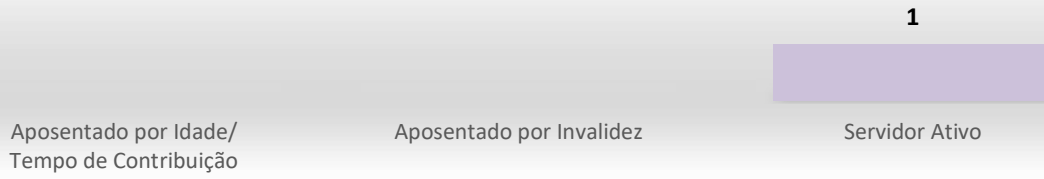
Secretaria



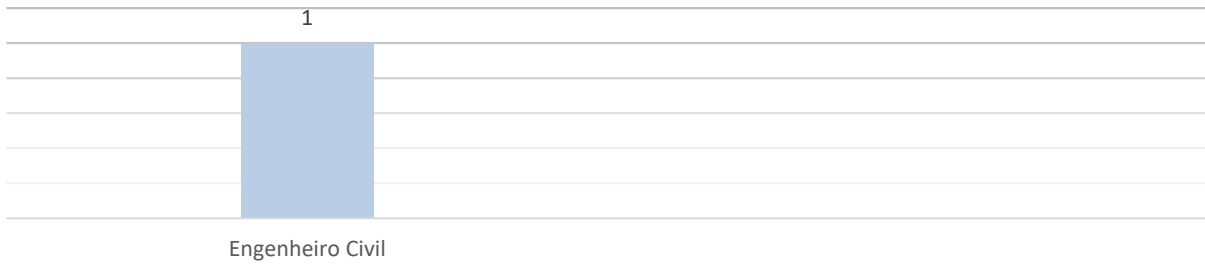
Gênero



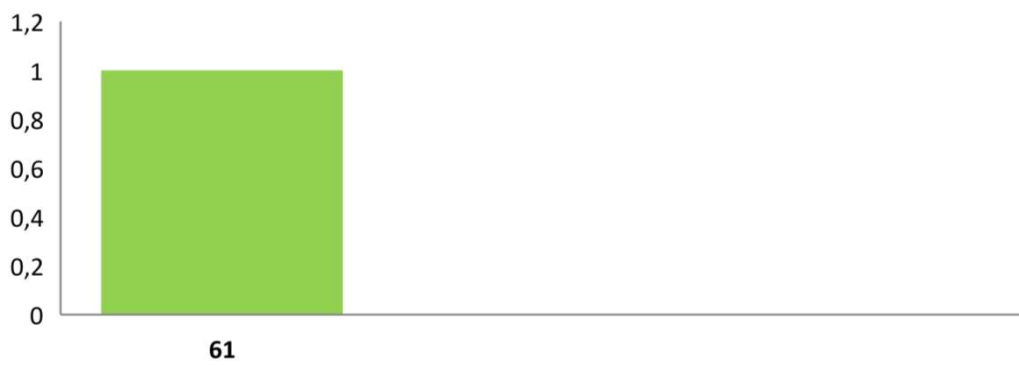
Pensão



CARGO (SERVIDOR ATIVO)



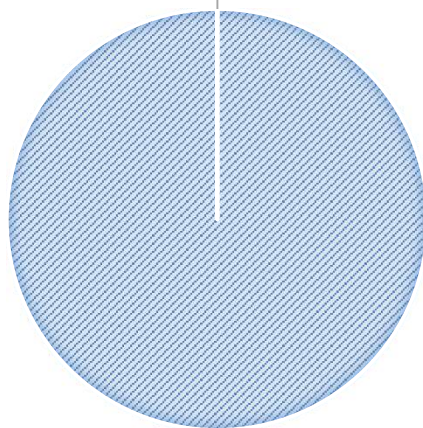
Idade média (Pensionista)



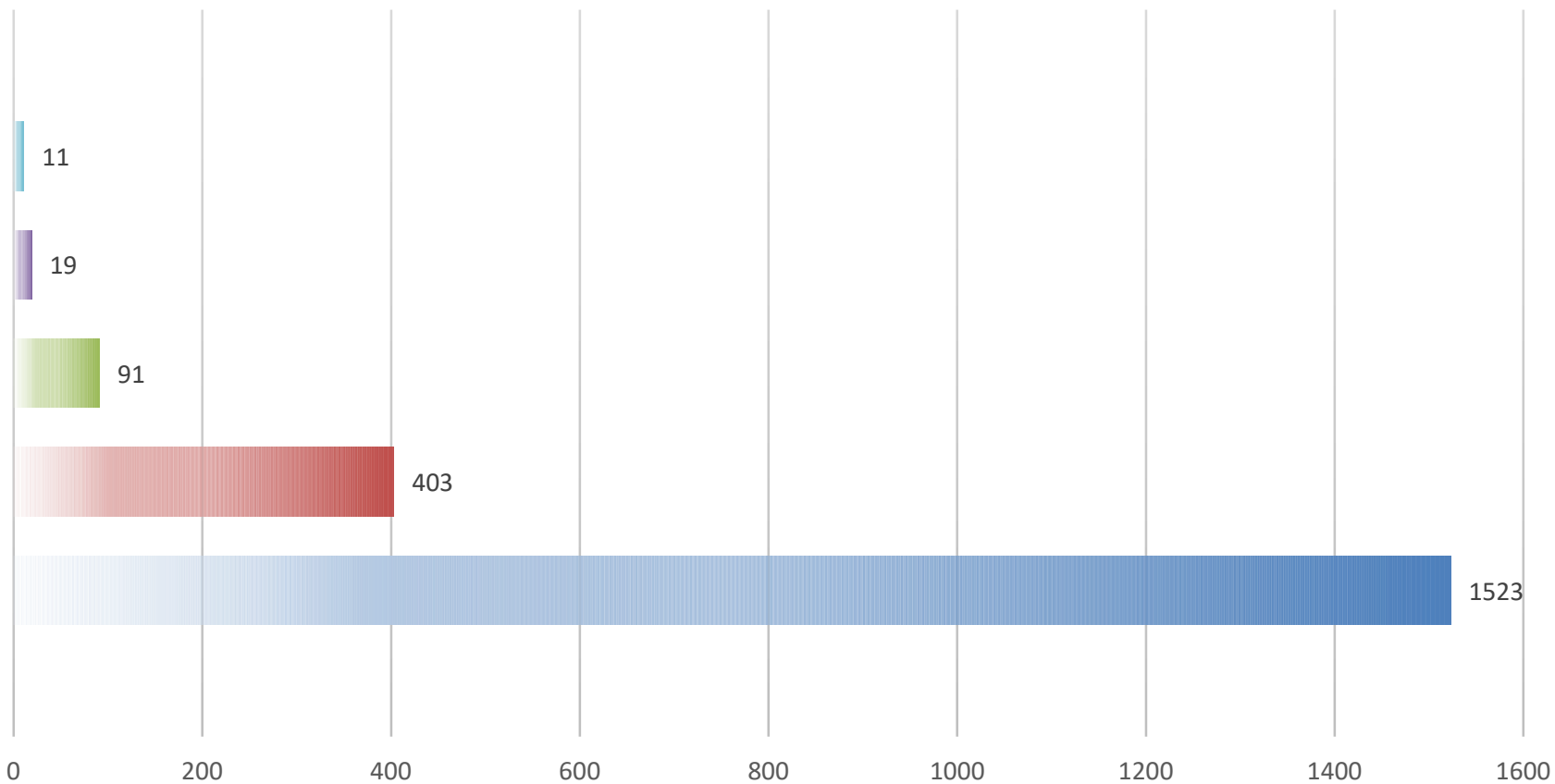
Gênero (Instituidor de Pensão)



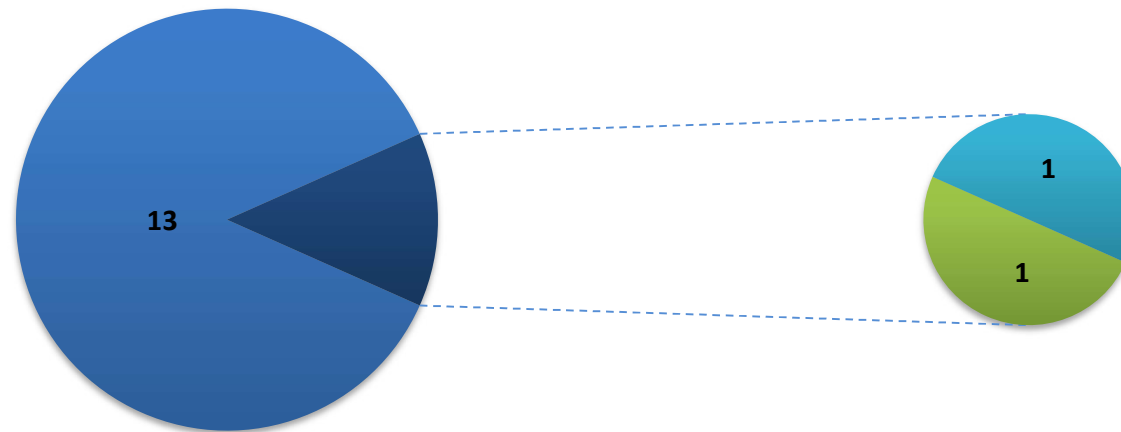
GÊNERO (PENSIONISTA)



QUADRO GERAL DE PESSOAL - CONTRIBUINTES (NOV/2023)



QUADRO GERAL DE PESSOAL BERTPREV (2022)



■ ATIVOS

■ APOSENTADORIAS

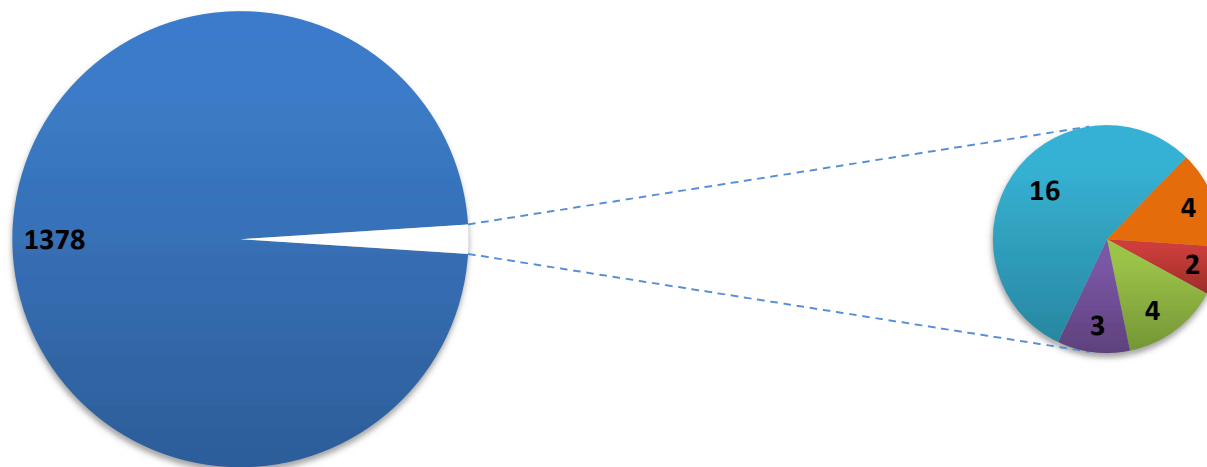
■ CEDIDOS (ao ENTE)

■ AUSENTES DO TRABALHO (ATIVOS)

■ LICENÇA SEM VENCIMENTOS (ATIVOS)

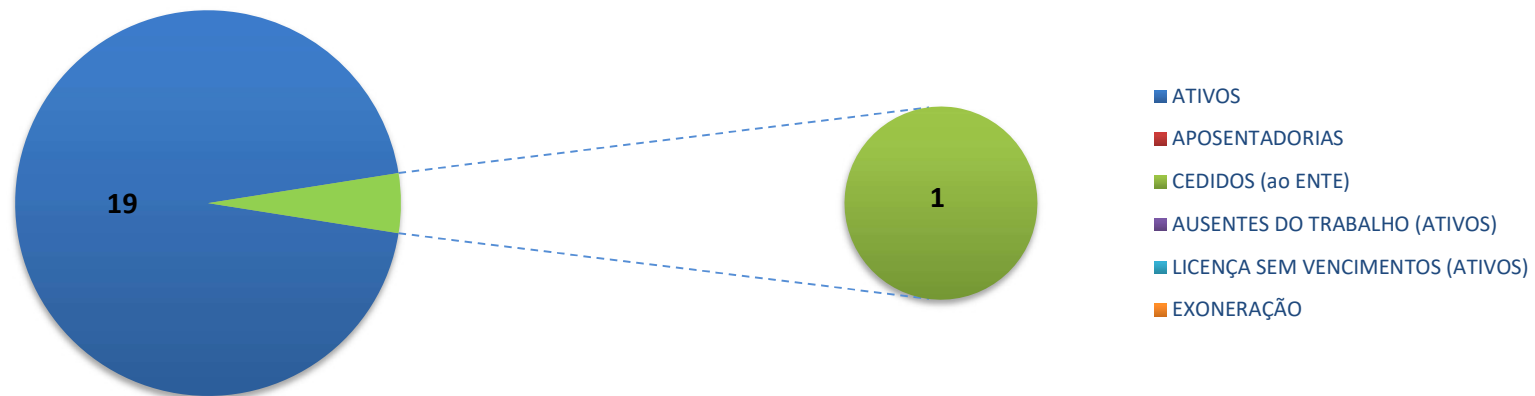
■ EXONERAÇÃO

QUADRO GERAL DE PESSOAL PMB (2022)

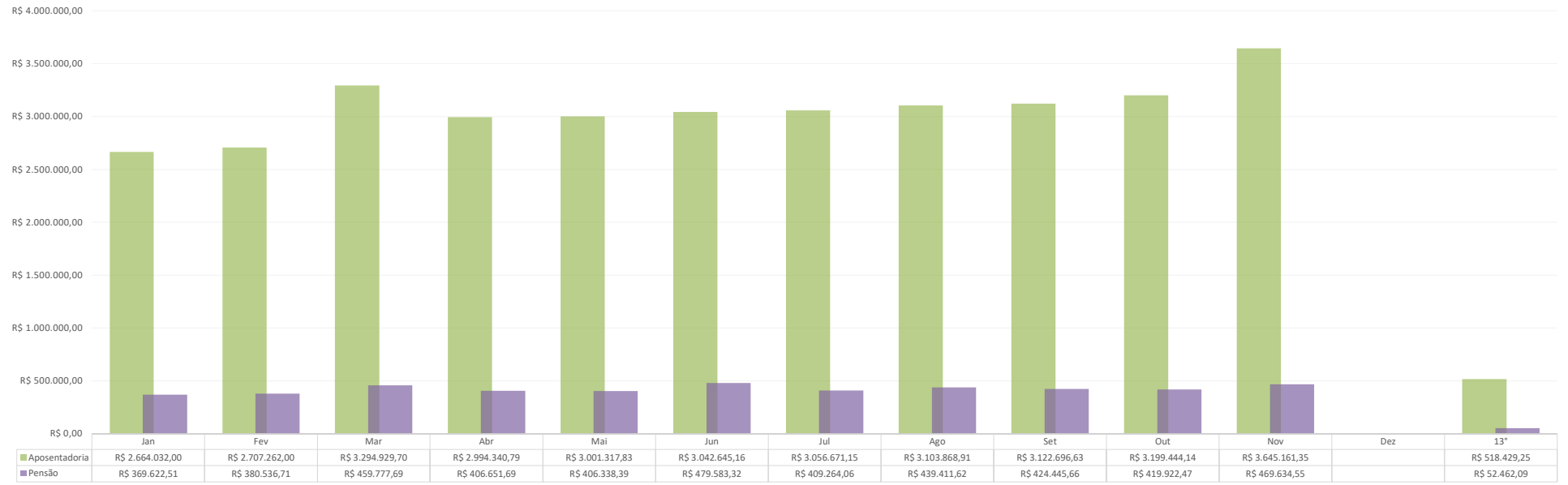


■ ATIVOS ■ APOSENTADORIAS ■ CEDIDOS (ATIVOS) ■ AUSENTES DO TRABALHO (ATIVOS) ■ LICENÇA SEM VENCIMENTOS (ATIVOS) ■ EXONERAÇÃO

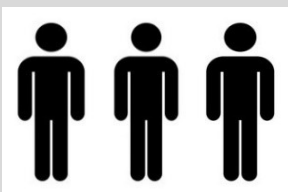
QUADRO GERAL DE PESSOAL CMB (2022)



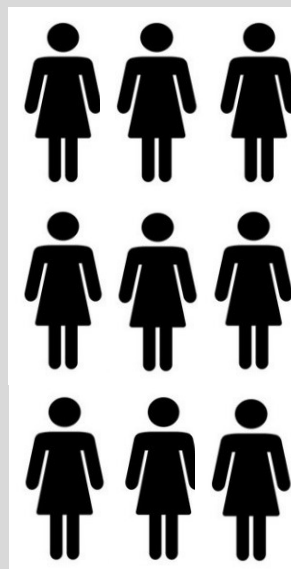
Pagamento Previdenciário 2023



DISTRIBUIÇÃO DE APOSENTADOS SEGUNDO O SEXO (2001 - 2023)

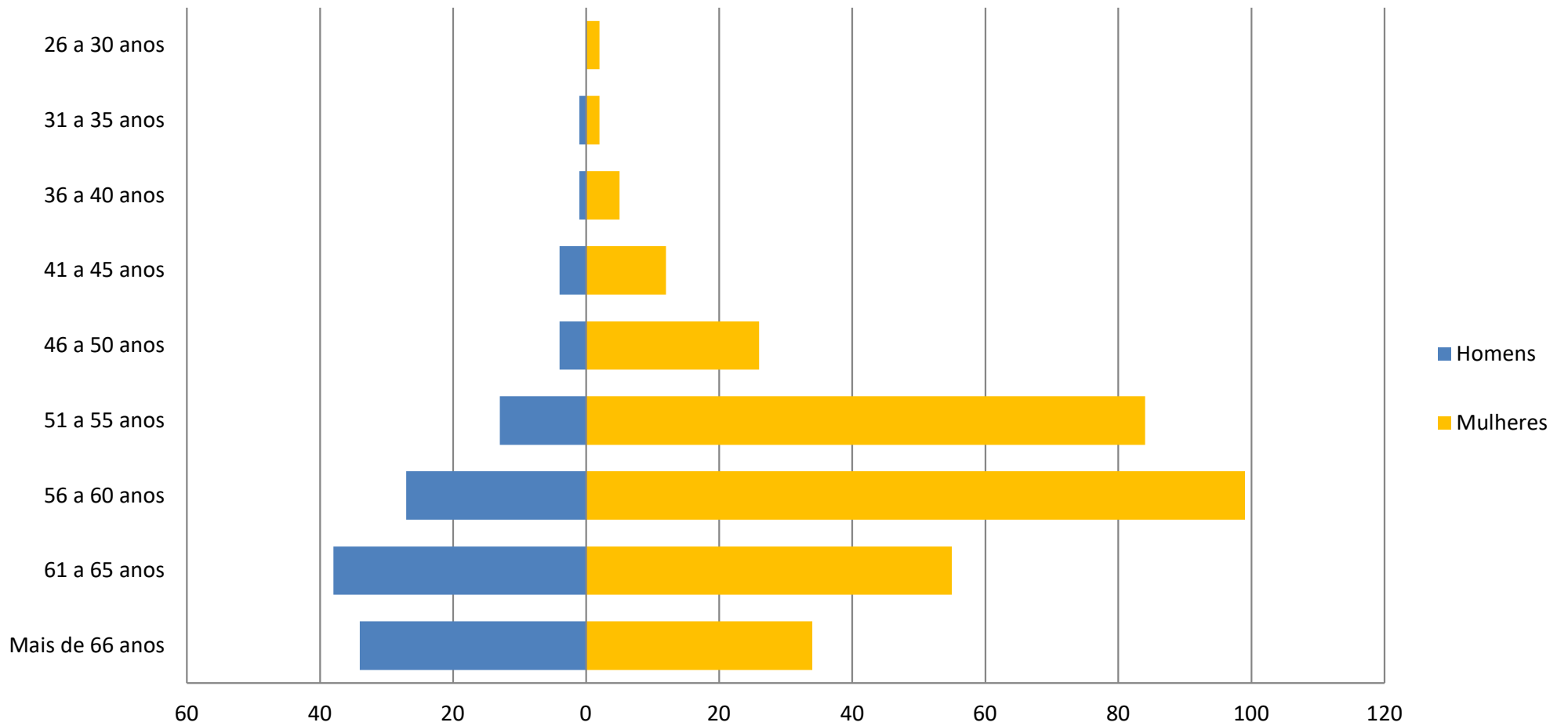


Homens
122
27,66%



Mulheres
319
72,34%

PIRÂMIDE ETÁRIA DOS SERVIDORES APOSENTADOS (2001 - 2023)



EVOLUÇÃO DO QUANTITATIVO DE APOSENTADOS

(2001 - 2023)

